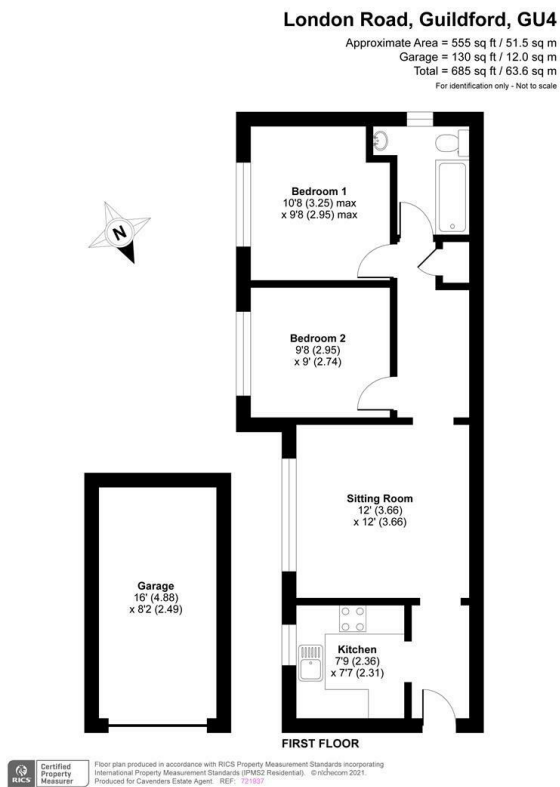


6 Barton Place London Road

, Guildford, GU4 7JT

Asking Price £275,000

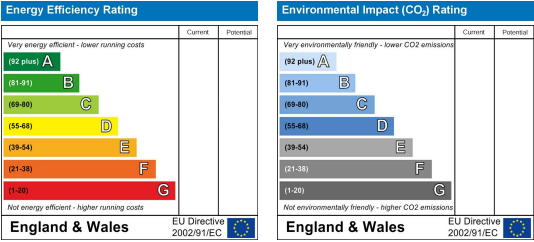
Floor Plan



Area Map



Energy Efficiency Graph



Viewing

Please contact us on 01483 457728 if you wish to arrange a viewing appointment for this property or require further information.

- Two double bedrooms
- Modern contemporary kitchen
- Light and airy
- Modern family bathroom
- Garage
- Only moments from local amenities
- Easy access to the A3
- Close to transport links



A two-double bedroom modern first floor apartment perfect for investment or an ideal first-time buyer purchase located in the popular village of Burham, only moments to local amenities and easy access to A3.

These particulars, whilst believed to be accurate are set out as a general outline only for guidance and do not constitute any part of an offer or contract. Intending purchasers should not rely on them as statements of representation of fact, but must satisfy themselves by inspection or otherwise as to their accuracy. No person in this firm's employment has the authority to make or give any representation or warranty in respect of the property.